

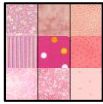
February "Log Cabin" center: finishes at 6"

Fabric



Color
Deep Rose /
Burgundy

Cut
Cut 1 - 1 1/2" square



Variety of Pinks

Cut 1" x 12" approx.. strips of **10** different pinks. Separate into 5 dark & 5 light then cut into segments as below:

Dark Pink		Light Pink	
Strip 1 -	1 1/2" & 2"	Strip 2 -	2" & 2 1/2"
Strip 3 -	2 1/2" & 3"	Strip 4 -	3" & 3 1/2"
Strip 5 -	3 1/2" & 4"	Strip 6 -	4" & 4 1/2"
Strip 7 -	4 1/2" & 5"	Strip 8 -	5" & 5 1/2"
Strip 9 -	5 1/2" & 6"	Strip 10 -	6" & 6 1/2"

You will also need:



Pale pink tonal
background

4 - 3 1/2" squares



Flying geese
Units

4 - Measuring 3 1/2" x 6 1/2" unfinished
(Use the method of your choice)

Sewing: Use a scant 1/4" seam



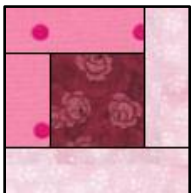
Start with "Strip 1" segments. Stitch the 1 1/2" segment to one side of the 1 1/2" deep colored center. Press towards the strip.



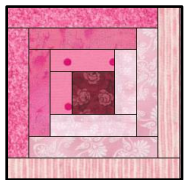
Stitch the 2" segment to the top of the log cabin. Press towards the strip.



Using the "Strip 2" segments. Stitch the 2" segment to the right side of the log cabin unit. Press towards the strip.



Stitch the 2 1/2" segment to the bottom of the log cabin unit. Press towards the strip.



Continue adding segments to the log cabin in a clockwise order. Press towards the strip.

February "Log Cabin" center: (continued)



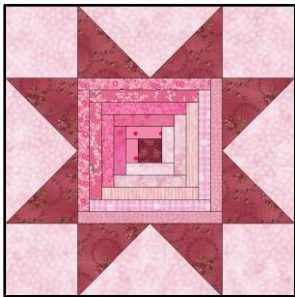
When all ten fabrics have been stitched on. Press.
Measure to make sure it is $6\frac{1}{2}$ "



Add flying geese units to two opposite sides of the nine patch.
Press towards the center



Add background squares to the ends of both remaining flying geese units.
Press towards the corner squares.



Finally, stitch the remaining flying geese and corner units to the last two sides of your block. Press.

Measure to make sure your block is $12\frac{1}{2}$ "